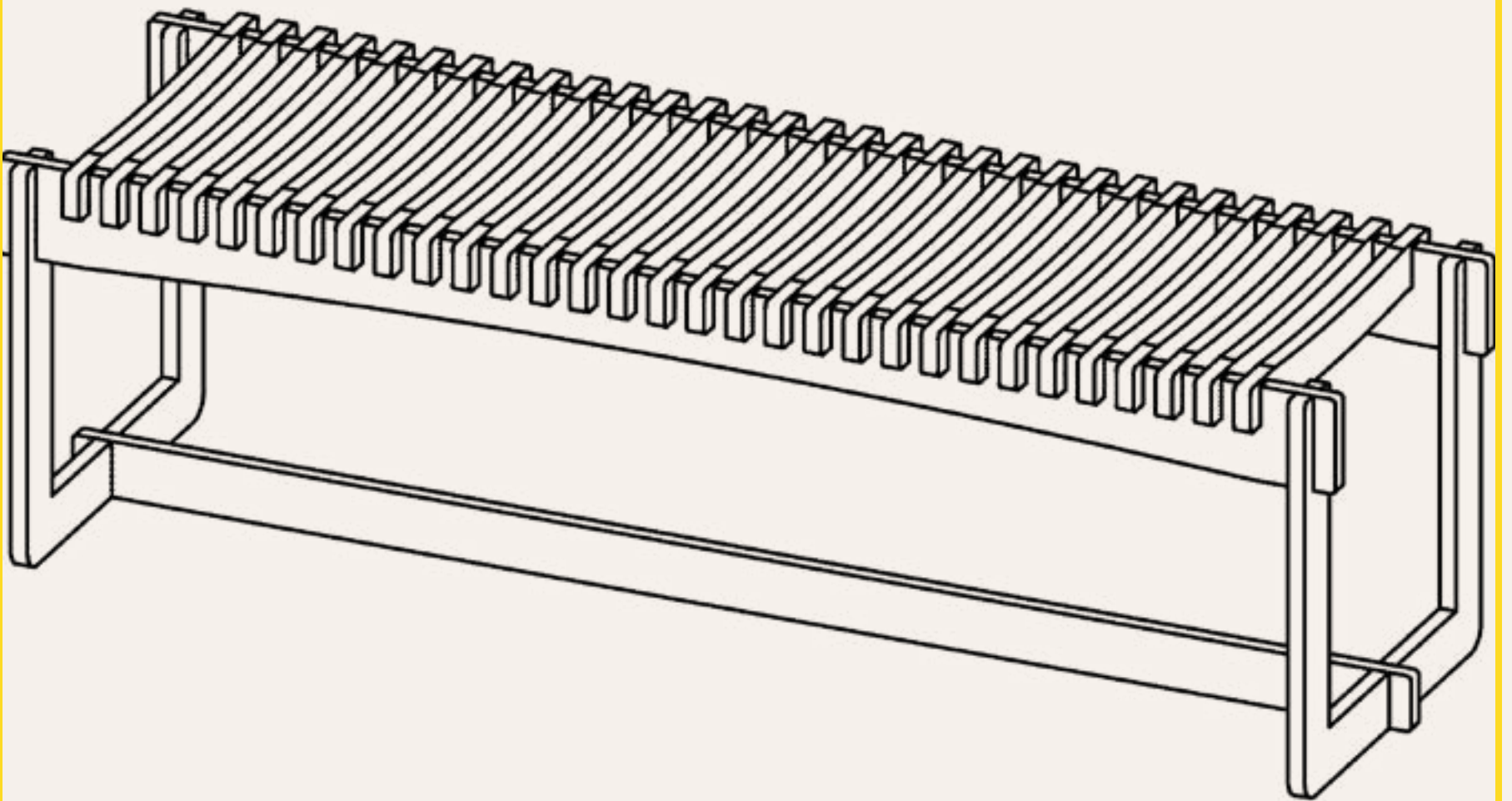


FLOURISH COLLECTION



SKU: DBSBEN1

Slatted Wooden Bench

USER GUIDE

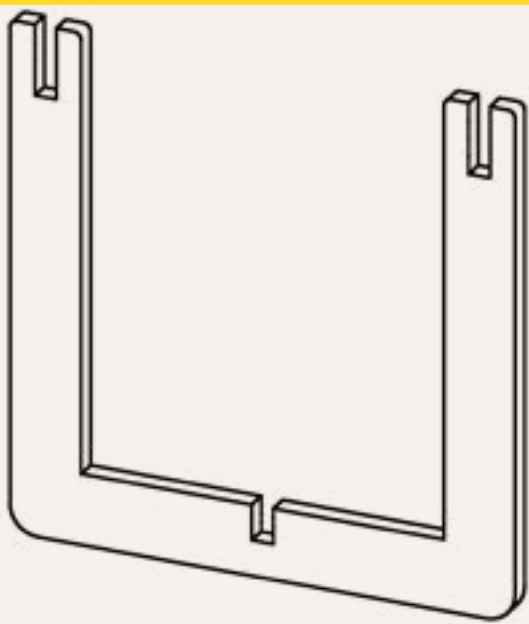
DANDELION

RESPONSIBLY CREATING BETTER PRODUCTS FOR A BETTER WORLD



Table of Contents

USER GUIDE



A. Bench Leg x2



B. Slats x31

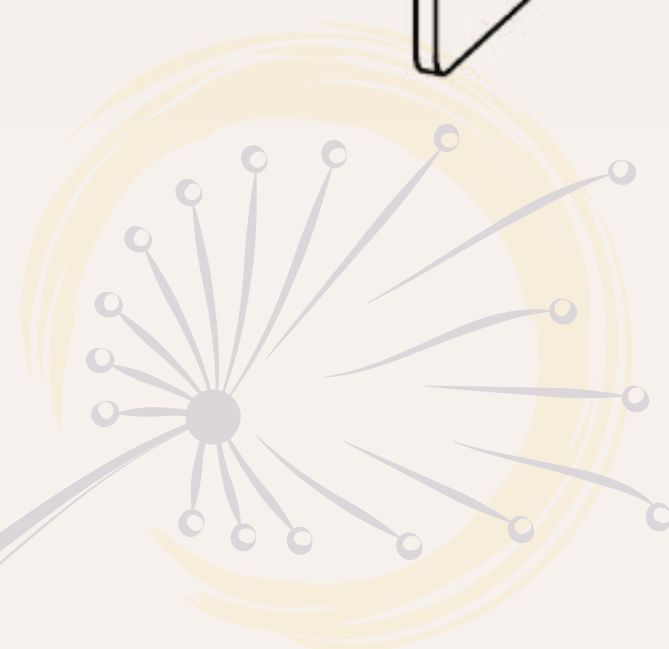
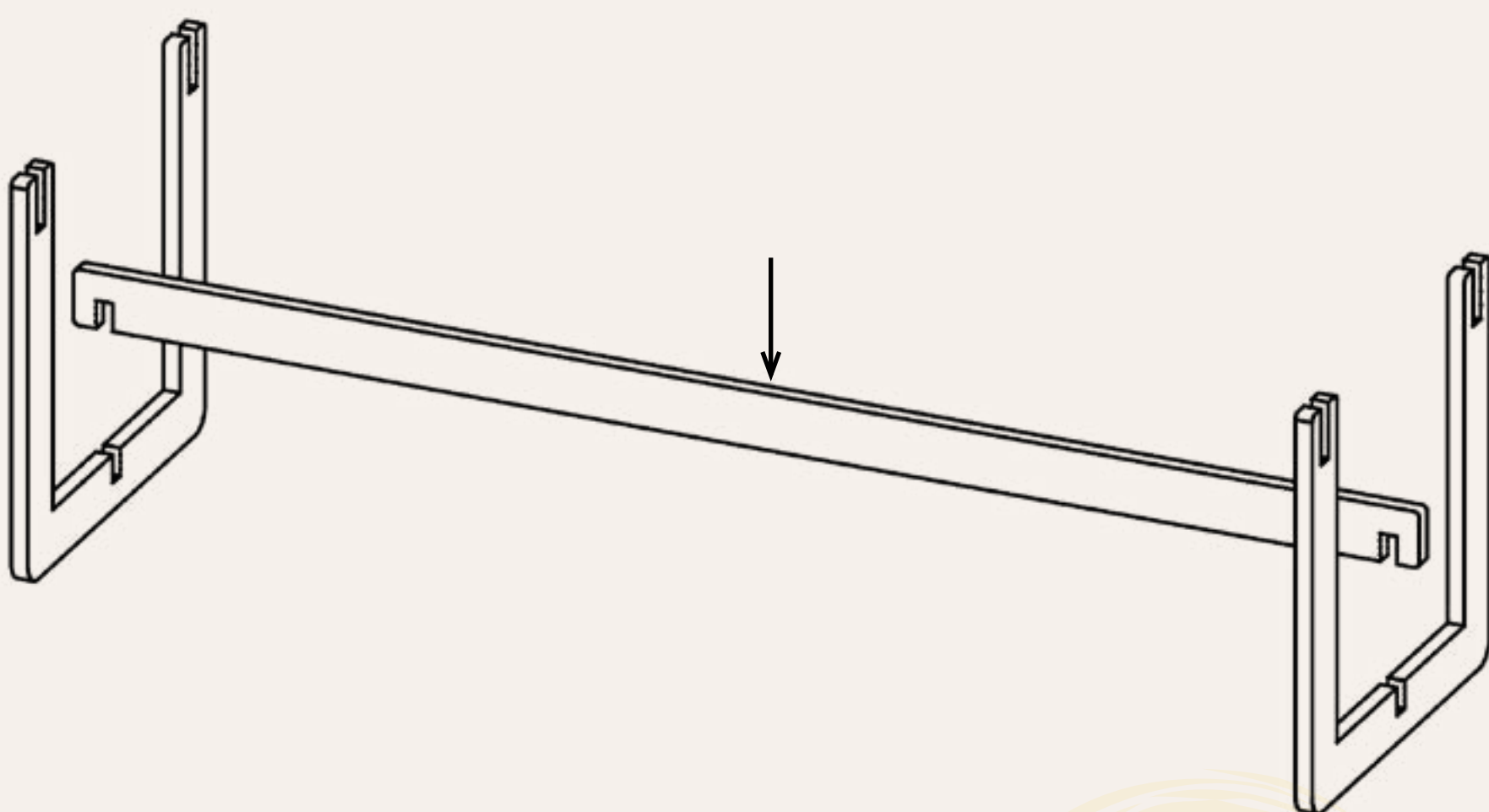


C. Slatted Support Bar x2



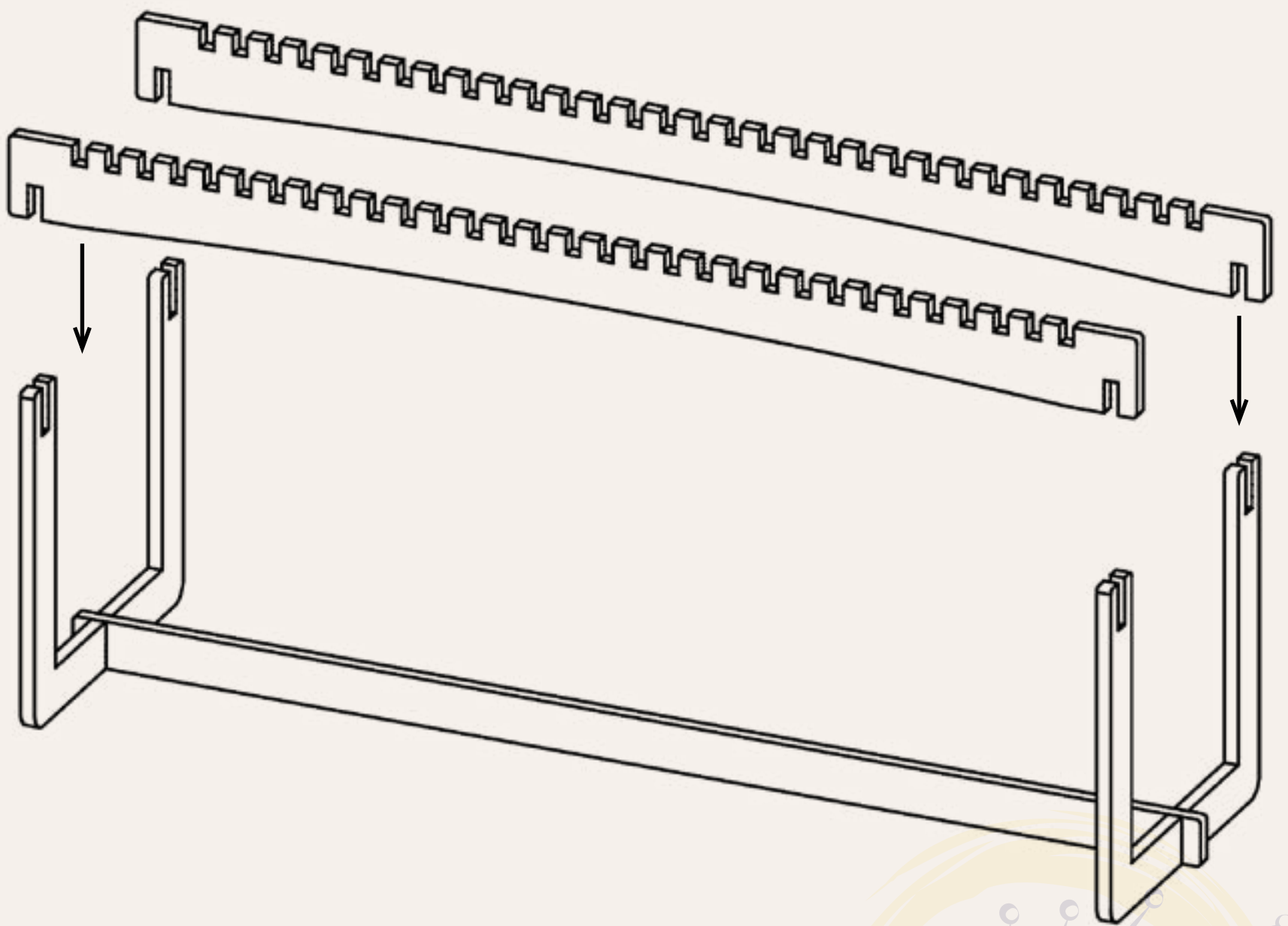
D. Bottom Support Bar x1

PARTS DIAGRAM



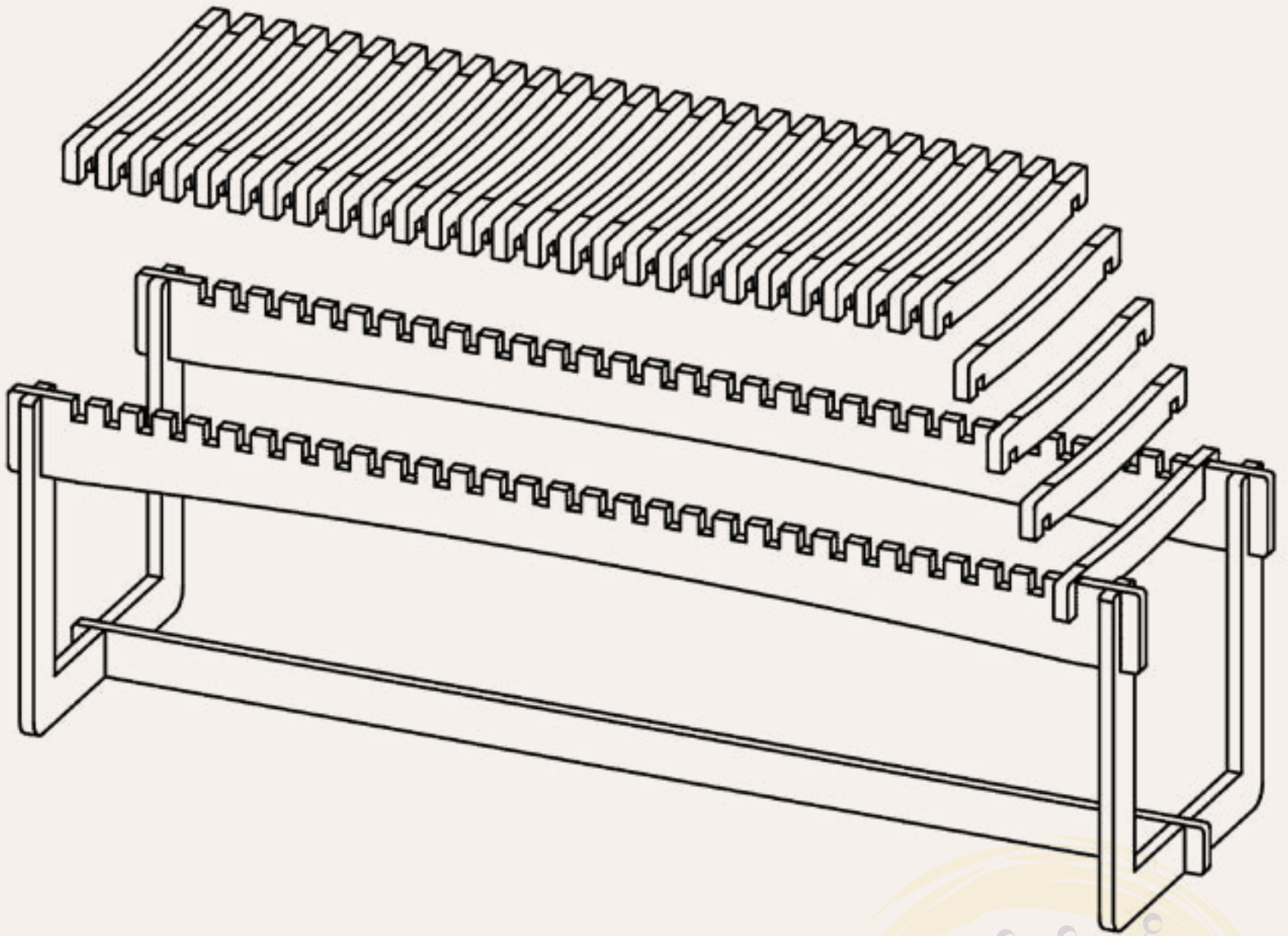
1. Insert bottom support bar into the notches on both bench leg pieces.

ASSEMBLY INSTRUCTIONS



2. On either side of the bench legs, slot slatted support bars into the bench legs.

ASSEMBLY INSTRUCTIONS



3. Press-fit each slat into the notches on the slatted support bars.
4. Once all slats are fitted, assembly is complete.

ASSEMBLY INSTRUCTIONS

THANK YOU FOR SPREADING
THE SEEDS OF SUSTAINABILITY
AND HELPING TO PROTECT
OUR PLANET.



HAVE A QUESTION? GET IN TOUCH WITH
OUR DANDELION REPRESENTATIVES AT:
888-257-6639

CONTACT US